

Acta Crystallographica Section E

Structure Reports

Online

ISSN 1600-5368

2-(3-Chloro-4-hydroxyphenyl)-N-(3,4-dimethoxyphenethyl)acetamide

Rohan A. Davis and Peter C. Healy*

Eskitis Institute for Cell and Molecular Therapies, Griffith University, Nathan, Brisbane 4111, Australia

Correspondence e-mail: p.healy@griffith.edu.au

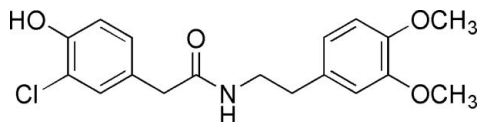
Received 2 May 2008; accepted 6 May 2008

Key indicators: single-crystal X-ray study; $T = 295$ K; mean $\sigma(\text{C}-\text{C}) = 0.005$ Å; R factor = 0.057; wR factor = 0.166; data-to-parameter ratio = 14.2.

The title compound, $\text{C}_{18}\text{H}_{20}\text{ClNO}_4$, was synthesized during the generation of a combinatorial library based on the fungal natural product 3-chloro-4-hydroxyphenylacetamide. It crystallizes as discrete molecules linked by intermolecular $C(9)$ chains of $\text{N}-\text{H}\cdots\text{O}$ and $\text{O}-\text{H}\cdots\text{O}$ hydrogen bonds which in turn combine to form chains of $R_2^2(20)$ rings.

Related literature

For related literature, see: Bernstein *et al.* (1995); Davis *et al.* (2005, 2007).



Experimental

Crystal data

$\text{C}_{18}\text{H}_{20}\text{ClNO}_4$
 $M_r = 349.80$
 Monoclinic, $P2_1/n$
 $a = 12.329$ (3) Å
 $b = 12.839$ (5) Å
 $c = 11.062$ (3) Å
 $\beta = 92.18$ (2)°

$V = 1749.8$ (9) Å³
 $Z = 4$
 Mo $K\alpha$ radiation
 $\mu = 0.24$ mm⁻¹
 $T = 295$ K
 $0.35 \times 0.35 \times 0.15$ mm

Data collection

Rigaku AFC-7R diffractometer
 Absorption correction: none
 3463 measured reflections
 3078 independent reflections
 1596 reflections with $I > 2\sigma(I)$

$R_{\text{int}} = 0.034$
 3 standard reflections
 every 150 reflections
 intensity decay: 0.2%

Refinement

$R[F^2 > 2\sigma(F^2)] = 0.056$
 $wR(F^2) = 0.165$
 $S = 0.99$
 3078 reflections

217 parameters
 H-atom parameters constrained
 $\Delta\rho_{\text{max}} = 0.21$ e Å⁻³
 $\Delta\rho_{\text{min}} = -0.31$ e Å⁻³

Table 1

Hydrogen-bond geometry (Å, °).

$D-\text{H}\cdots A$	$D-\text{H}$	$\text{H}\cdots A$	$D\cdots A$	$D-\text{H}\cdots A$
$\text{N1}-\text{H1}\cdots\text{O14}^i$	0.91	2.37	3.066 (4)	134
$\text{O4}-\text{H4}\cdots\text{O8}^i$	0.90	1.74	2.616 (4)	165

Symmetry code: (i) $x - \frac{1}{2}, -y + \frac{1}{2}, z - \frac{1}{2}$.

Data collection: *MSC/AFC7 Diffractometer Control for Windows* (Molecular Structure Corporation, 1999); cell refinement: *MSC/AFC7 Diffractometer Control for Windows*; data reduction: *TEXSAN for Windows* (Molecular Structure Corporation, 2001); program(s) used to solve structure: *TEXSAN for Windows*; program(s) used to refine structure: *TEXSAN for Windows* and *SHELXL97* (Sheldrick, 2008); molecular graphics: *ORTEP-3* (Farrugia, 1997); software used to prepare material for publication: *TEXSAN for Windows* and *PLATON* (Spek, 2003).

We acknowledge financial support of this work by Griffith University and the Eskitis Institute for Cell and Molecular Therapies.

Supplementary data and figures for this paper are available from the IUCr electronic archives (Reference: TK2268).

References

- Bernstein, J., Davis, R. E., Shimoni, L. & Chang, N. L. (1995). *Angew. Chem. Int. Ed. Engl.* **34**, 1555–1573.
 Davis, R. A., Pierens, G. K. & Parsons, P. G. (2007). *Magn. Reson. Chem.* **45**, 442–445.
 Davis, R. A., Watters, D. & Healy, P. C. (2005). *Tetrahedron Lett.* **46**, 919–921.
 Farrugia, L. J. (1997). *J. Appl. Cryst.* **30**, 565.
 Molecular Structure Corporation (1999). *MSC/AFC7 Diffractometer Control for Windows*. MSC, The Woodlands, Texas, USA.
 Molecular Structure Corporation (2001). *TEXSAN for Windows*. MSC, The Woodlands, Texas, USA.
 Sheldrick, G. M. (2008). *Acta Cryst.* **A64**, 112–122.
 Spek, A. L. (2003). *J. Appl. Cryst.* **36**, 7–13.

supplementary materials

Acta Cryst. (2008). E64, o1057 [doi:10.1107/S1600536808013299]

2-(3-Chloro-4-hydroxyphenyl)-*N*-(3,4-dimethoxyphenethyl)acetamide

R. A. Davis and P. C. Healy

Comment

The title compound (I) was synthesized during the generation of a combinatorial library based on the fungal natural product 3-chloro-4-hydroxyphenylacetamide (Davis *et al.*, 2005, 2007). Compound (I) was shown to display moderate cytotoxicity towards the human melanoma cell line MM96L with 94% inhibition at 100 $\mu\text{g ml}^{-1}$ (Davis *et al.*, 2007).

This compound crystallizes as discrete molecules with three planar components: the acetamide group (C7—C8(O8)—N1—C9), the 3-chloro-4-hydroxyphenyl group (C1—C7, O4, C13), and the 3,4-dimethoxybenzyl group (C11—C16, C10, O13—C17, O14—C18), Fig. 1. The C9—C10—C11—C16 and C2—C1—C7—C8 torsion angles are $-91.8(4)^\circ$ and $-78.9(4)^\circ$ respectively. In the crystal structure the amide (N1) and hydroxy (O4) groups form C(9) chains (Bernstein *et al.*, 1995) of intermolecular N—H \cdots O and O—H \cdots O hydrogen bonds with the methoxy oxygen (O14) and the carbonyl oxygen (O8), respectively (Table 1) which in turn combine to form chains of $R_2^2(20)$ rings (Fig. 2).

Experimental

Compound (I) was prepared as previously reported (Davis *et al.*, 2007). Crystals suitable for X-ray diffraction studies were obtained by slow evaporation of a n-hexane/ethyl acetate (1:1) solution of (I); m.p. 421–423 K.

Refinement

The carbon-bound H atoms were constrained as riding atoms with C—H = 0.95–0.96 Å. The amide and hydroxyl protons were located in difference Fourier maps and constrained with N—H, O—H = 0.90 Å. $U_{\text{iso}}(\text{H})$ values were set at $1.2U_{\text{eq}}$ of the parent atom.

Figures

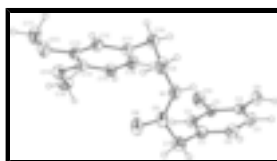


Fig. 1. View of (I) with the atom numbering scheme. Displacement ellipsoids for non-H atoms are drawn at the 30% probability level.

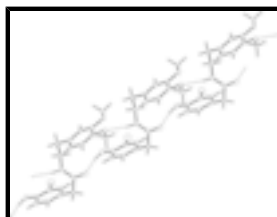


Fig. 2. View of the intramolecular N—H \cdots O and O—H \cdots O hydrogen bonding (dashed lines) in (I).

2-(3-Chloro-4-hydroxyphenyl)-N-(3,4-dimethoxyphenethyl)acetamide

Crystal data

$C_{18}H_{20}ClNO_4$	$F_{000} = 736$
$M_r = 349.80$	$D_x = 1.328 \text{ Mg m}^{-3}$
Monoclinic, $P2_1/n$	Mo $K\alpha$ radiation
Hall symbol: -P 2yn	$\lambda = 0.7107 \text{ \AA}$
$a = 12.329 (3) \text{ \AA}$	Cell parameters from 25 reflections
$b = 12.839 (5) \text{ \AA}$	$\theta = 12.7\text{--}16.7^\circ$
$c = 11.062 (3) \text{ \AA}$	$\mu = 0.24 \text{ mm}^{-1}$
$\beta = 92.18 (2)^\circ$	$T = 295 \text{ K}$
$V = 1749.8 (9) \text{ \AA}^3$	Prismatic, colourless
$Z = 4$	$0.35 \times 0.35 \times 0.15 \text{ mm}$

Data collection

Rigaku AFC-7R diffractometer	$R_{\text{int}} = 0.034$
Radiation source: Rigaku rotating anode	$\theta_{\text{max}} = 25.0^\circ$
Monochromator: graphite	$\theta_{\text{min}} = 2.5^\circ$
$T = 295 \text{ K}$	$h = -14 \rightarrow 6$
ω -2 θ scans	$k = 0 \rightarrow 15$
Absorption correction: none	$l = -13 \rightarrow 13$
3463 measured reflections	3 standard reflections
3078 independent reflections	every 150 reflections
1596 reflections with $I > 2\sigma(I)$	intensity decay: 0.2%

Refinement

Refinement on F^2	Secondary atom site location: difference Fourier map
Least-squares matrix: full	Hydrogen site location: inferred from neighbouring sites
$R[F^2 > 2\sigma(F^2)] = 0.056$	H-atom parameters constrained
$wR(F^2) = 0.165$	$w = 1/[\sigma^2(F_o^2) + (0.0802P)^2]$
$S = 0.99$	where $P = (F_o^2 + 2F_c^2)/3$
3078 reflections	$(\Delta/\sigma)_{\text{max}} < 0.001$
217 parameters	$\Delta\rho_{\text{max}} = 0.21 \text{ e \AA}^{-3}$
Primary atom site location: structure-invariant direct methods	$\Delta\rho_{\text{min}} = -0.31 \text{ e \AA}^{-3}$
	Extinction correction: none

Special details

Experimental. The scan width was $(1.68 + 0.30\tan\theta)^\circ$ with an ω scan speed of 16° per minute (up to 4 scans to achieve $I/\sigma(I) > 10$). Stationary background counts were recorded at each end of the scan, and the scan time:background time ratio was 2:1.

Geometry. Bond distances, angles *etc.* have been calculated using the rounded fractional coordinates. All su's are estimated from the variances of the (full) variance-covariance matrix. The cell e.s.d.'s are taken into account in the estimation of distances, angles and torsion angles

Refinement. Refinement of F^2 against ALL reflections. The weighted R -factor wR and goodness of fit S are based on F^2 , conventional R -factors R are based on F , with F set to zero for negative F^2 . The threshold expression of $F^2 > 2\sigma(F^2)$ is used only for calculating R -factors(gt) *etc.* and is not relevant to the choice of reflections for refinement. R -factors based on F^2 are statistically about twice as large as those based on F , and R -factors based on ALL data will be even larger.

Fractional atomic coordinates and isotropic or equivalent isotropic displacement parameters (\AA^2)

	<i>x</i>	<i>y</i>	<i>z</i>	$U_{\text{iso}}^*/U_{\text{eq}}$
Cl3	0.45169 (9)	0.55050 (8)	0.30062 (9)	0.0775 (4)
O4	0.28934 (19)	0.46680 (18)	0.13154 (19)	0.0576 (8)
O8	0.5970 (2)	0.0875 (2)	0.5455 (2)	0.0730 (10)
O13	1.02796 (18)	0.23926 (19)	0.5658 (2)	0.0617 (9)
O14	0.94460 (19)	0.41834 (18)	0.6082 (2)	0.0596 (9)
N1	0.5696 (2)	0.1267 (2)	0.3474 (3)	0.0582 (11)
C1	0.3920 (3)	0.2566 (3)	0.3989 (3)	0.0520 (12)
C2	0.4348 (3)	0.3564 (3)	0.3927 (3)	0.0531 (14)
C3	0.3990 (3)	0.4245 (3)	0.3042 (3)	0.0488 (12)
C4	0.3205 (3)	0.3961 (3)	0.2174 (3)	0.0449 (11)
C5	0.2765 (3)	0.2977 (3)	0.2247 (3)	0.0506 (12)
C6	0.3118 (3)	0.2284 (3)	0.3136 (3)	0.0544 (12)
C7	0.4368 (3)	0.1806 (3)	0.4917 (3)	0.0640 (16)
C8	0.5425 (3)	0.1284 (3)	0.4612 (4)	0.0555 (12)
C9	0.6665 (3)	0.0772 (3)	0.3040 (4)	0.0674 (16)
C10	0.7448 (3)	0.1555 (3)	0.2523 (3)	0.0669 (14)
C11	0.7947 (3)	0.2290 (3)	0.3448 (3)	0.0541 (14)
C12	0.8890 (3)	0.1991 (3)	0.4103 (3)	0.0527 (12)
C13	0.9362 (3)	0.2626 (3)	0.4968 (3)	0.0488 (11)
C14	0.8904 (3)	0.3599 (3)	0.5209 (3)	0.0506 (11)
C15	0.7965 (3)	0.3898 (3)	0.4579 (3)	0.0576 (12)
C16	0.7501 (3)	0.3244 (3)	0.3708 (3)	0.0613 (14)
C17	1.0790 (3)	0.1422 (3)	0.5422 (4)	0.0773 (17)
C18	0.8999 (3)	0.5175 (3)	0.6355 (4)	0.0728 (17)
H1	0.52920	0.15340	0.28470	0.0690*
H2	0.48940	0.37790	0.45040	0.0640*
H4	0.22920	0.44390	0.09130	0.0690*
H5	0.22100	0.27710	0.16780	0.0600*
H6	0.28090	0.16070	0.31640	0.0650*
H7A	0.44830	0.21720	0.56580	0.0770*
H7B	0.38400	0.12770	0.50170	0.0770*
H9A	0.70220	0.04160	0.36940	0.0810*
H9B	0.64580	0.02860	0.24260	0.0810*
H10A	0.80160	0.11820	0.21600	0.0800*
H10B	0.70660	0.19560	0.19240	0.0800*
H12	0.92100	0.13350	0.39450	0.0630*

supplementary materials

H15	0.76400	0.45500	0.47430	0.0690*
H16	0.68580	0.34580	0.32790	0.0730*
H17A	1.14550	0.13770	0.58820	0.0930*
H17B	1.03260	0.08680	0.56430	0.0930*
H17C	1.09290	0.13730	0.45860	0.0930*
H18A	0.82940	0.50840	0.66600	0.0870*
H18B	0.94520	0.55140	0.69460	0.0870*
H18C	0.89500	0.55850	0.56410	0.0870*

Atomic displacement parameters (\AA^2)

	U^{11}	U^{22}	U^{33}	U^{12}	U^{13}	U^{23}
C13	0.0899 (8)	0.0688 (7)	0.0723 (7)	-0.0335 (6)	-0.0161 (5)	0.0010 (5)
O4	0.0595 (15)	0.0560 (15)	0.0560 (14)	-0.0045 (12)	-0.0141 (12)	0.0018 (12)
O8	0.0645 (17)	0.0801 (19)	0.0720 (17)	0.0059 (15)	-0.0273 (14)	0.0085 (15)
O13	0.0508 (15)	0.0643 (17)	0.0686 (16)	0.0122 (13)	-0.0165 (12)	-0.0127 (13)
O14	0.0601 (16)	0.0540 (16)	0.0643 (15)	0.0047 (13)	-0.0015 (12)	-0.0106 (12)
N1	0.0493 (19)	0.067 (2)	0.057 (2)	0.0096 (16)	-0.0136 (15)	-0.0031 (16)
C1	0.050 (2)	0.052 (2)	0.054 (2)	0.0073 (18)	0.0011 (17)	0.0026 (17)
C2	0.045 (2)	0.064 (3)	0.050 (2)	-0.0033 (18)	-0.0018 (16)	-0.0048 (18)
C3	0.047 (2)	0.049 (2)	0.050 (2)	-0.0101 (17)	-0.0029 (16)	-0.0042 (17)
C4	0.0438 (19)	0.045 (2)	0.0461 (19)	0.0037 (17)	0.0030 (15)	-0.0058 (16)
C5	0.040 (2)	0.050 (2)	0.061 (2)	-0.0008 (16)	-0.0082 (17)	-0.0053 (17)
C6	0.053 (2)	0.045 (2)	0.065 (2)	0.0008 (17)	0.0003 (18)	-0.0048 (18)
C7	0.069 (3)	0.063 (3)	0.060 (2)	0.012 (2)	0.0017 (19)	0.0085 (19)
C8	0.056 (2)	0.047 (2)	0.062 (2)	-0.0032 (18)	-0.017 (2)	-0.0027 (19)
C9	0.056 (2)	0.066 (3)	0.079 (3)	0.014 (2)	-0.013 (2)	-0.018 (2)
C10	0.051 (2)	0.091 (3)	0.058 (2)	0.013 (2)	-0.0077 (18)	-0.010 (2)
C11	0.045 (2)	0.068 (3)	0.049 (2)	0.0019 (19)	-0.0020 (16)	-0.0011 (18)
C12	0.045 (2)	0.060 (2)	0.053 (2)	0.0025 (17)	0.0000 (17)	-0.0080 (18)
C13	0.0361 (19)	0.056 (2)	0.054 (2)	0.0038 (17)	-0.0033 (16)	0.0037 (17)
C14	0.047 (2)	0.058 (2)	0.0474 (19)	-0.0014 (18)	0.0082 (16)	0.0020 (18)
C15	0.055 (2)	0.057 (2)	0.061 (2)	0.0103 (19)	0.0056 (19)	0.0072 (19)
C16	0.048 (2)	0.072 (3)	0.063 (2)	0.010 (2)	-0.0076 (18)	0.008 (2)
C17	0.065 (3)	0.078 (3)	0.087 (3)	0.025 (2)	-0.022 (2)	-0.017 (2)
C18	0.071 (3)	0.065 (3)	0.083 (3)	0.004 (2)	0.010 (2)	-0.013 (2)

Geometric parameters (\AA , $^\circ$)

C13—C3	1.744 (4)	C12—C13	1.370 (5)
O4—C4	1.359 (4)	C13—C14	1.401 (5)
O8—C8	1.245 (5)	C14—C15	1.383 (5)
O13—C13	1.374 (4)	C15—C16	1.385 (5)
O13—C17	1.425 (5)	C2—H2	0.9500
O14—C14	1.376 (4)	C5—H5	0.9500
O14—C18	1.424 (5)	C6—H6	0.9500
O4—H4	0.9000	C7—H7A	0.9500
N1—C9	1.451 (5)	C7—H7B	0.9500
N1—C8	1.315 (5)	C9—H9A	0.9500

N1—H1	0.9100	C9—H9B	0.9500
C1—C2	1.388 (5)	C10—H10A	0.9500
C1—C7	1.506 (5)	C10—H10B	0.9500
C1—C6	1.389 (5)	C12—H12	0.9500
C2—C3	1.373 (5)	C15—H15	0.9500
C3—C4	1.386 (5)	C16—H16	0.9500
C4—C5	1.379 (5)	C17—H17A	0.9500
C5—C6	1.384 (5)	C17—H17B	0.9500
C7—C8	1.515 (5)	C17—H17C	0.9500
C9—C10	1.520 (5)	C18—H18A	0.9500
C10—C11	1.506 (5)	C18—H18B	0.9500
C11—C16	1.377 (5)	C18—H18C	0.9500
C11—C12	1.400 (5)		
C13...O4	2.894 (3)	C14...H18C ^{vii}	3.0300
C13...C12 ⁱ	3.646 (4)	C15...H18A	2.7800
C13...H12 ⁱ	2.9200	C15...H9B ⁱ	2.9500
C13...H17C ⁱ	3.1100	C15...H18C	2.7300
C13...H2 ⁱⁱ	2.9700	C17...H12	2.5000
O4...C13	2.894 (3)	C17...H10B ^{iv}	3.0600
O4...C17 ⁱ	3.411 (5)	C18...H15	2.5300
O4...O8 ⁱⁱⁱ	2.616 (4)	H1...C1	2.5200
O8...C4 ^{iv}	3.295 (4)	H1...C6	2.8800
O8...C5 ^{iv}	3.266 (5)	H1...H10B	2.5100
O8...O4 ^{iv}	2.616 (4)	H1...O13 ⁱⁱⁱ	2.7900
O8...C8 ^v	3.262 (5)	H1...O14 ⁱⁱⁱ	2.3700
O13...O14	2.569 (3)	H2...H7A	2.4900
O14...C6 ^{iv}	3.417 (4)	H2...C13 ⁱⁱ	2.9700
O14...O13	2.569 (3)	H4...H5	2.3100
O14...N1 ^{iv}	3.066 (4)	H4...O8 ⁱⁱⁱ	1.7400
O4...H17C ⁱ	2.8300	H4...C8 ⁱⁱⁱ	2.8200
O4...H18A ⁱⁱ	2.7400	H4...H9A ⁱⁱⁱ	2.4700
O4...H6 ^{vi}	2.7100	H5...H4	2.3100
O8...H9A	2.4500	H5...O8 ⁱⁱⁱ	2.6500
O8...H4 ^{iv}	1.7400	H6...H7B	2.4100
O8...H7B ^v	2.8200	H6...O4 ^{ix}	2.7100
O8...H5 ^{iv}	2.6500	H7A...H2	2.4900
O13...H1 ^{iv}	2.7900	H7B...H6	2.4100
O13...H10B ^{iv}	2.7000	H7B...O8 ^v	2.8200
O14...H18C ^{vii}	2.8100	H9A...O8	2.4500
O14...H1 ^{iv}	2.3700	H9A...C12	3.0900
N1...C2	3.431 (5)	H9A...H4 ^{iv}	2.4700
N1...C6	3.443 (5)	H9B...C15 ^{viii}	2.9500
N1...C16	3.379 (5)	H10A...H12	2.4300

supplementary materials

N1...O14 ⁱⁱⁱ	3.066 (4)	H10B...H1	2.5100
C2...N1	3.431 (5)	H10B...H16	2.4600
C4...C18 ⁱⁱ	3.406 (5)	H10B...O13 ⁱⁱⁱ	2.7000
C4...O8 ⁱⁱⁱ	3.295 (4)	H10B...C17 ⁱⁱⁱ	3.0600
C4...C13 ⁱⁱⁱ	3.522 (5)	H10B...H17A ⁱⁱⁱ	2.5300
C5...C14 ⁱⁱⁱ	3.375 (5)	H12...C17	2.5000
C5...C13 ⁱⁱⁱ	3.348 (5)	H12...H10A	2.4300
C5...O8 ⁱⁱⁱ	3.266 (5)	H12...H17B	2.3600
C6...C14 ⁱⁱⁱ	3.598 (5)	H12...H17C	2.2100
C6...N1	3.443 (5)	H12...C13 ^{viii}	2.9200
C6...O14 ⁱⁱⁱ	3.417 (4)	H15...C18	2.5300
C8...C8 ^v	3.574 (6)	H15...H18A	2.3400
C8...O8 ^v	3.262 (5)	H15...H18C	2.2900
C12...C13 ^{viii}	3.646 (4)	H16...H10B	2.4600
C13...C4 ^{iv}	3.522 (5)	H17A...H10B ^{iv}	2.5300
C13...C5 ^{iv}	3.348 (5)	H17B...C12	2.8100
C14...C18 ^{vii}	3.535 (6)	H17B...H12	2.3600
C14...C6 ^{iv}	3.598 (5)	H17C...C12	2.6700
C14...C5 ^{iv}	3.375 (5)	H17C...H12	2.2100
C16...N1	3.379 (5)	H17C...C13 ^{viii}	3.1100
C17...O4 ^{viii}	3.411 (5)	H17C...O4 ^{viii}	2.8300
C18...C4 ⁱⁱ	3.406 (5)	H18A...C15	2.7800
C18...C14 ^{vii}	3.535 (6)	H18A...H15	2.3400
C1...H1	2.5200	H18A...O4 ⁱⁱ	2.7400
C3...H18A ⁱⁱ	2.9800	H18A...C3 ⁱⁱ	2.9800
C4...H18A ⁱⁱ	2.6000	H18A...C4 ⁱⁱ	2.6000
C5...H18A ⁱⁱ	3.0800	H18A...C5 ⁱⁱ	3.0800
C6...H1	2.8800	H18C...C15	2.7300
C8...H4 ^{iv}	2.8200	H18C...H15	2.2900
C12...H17B	2.8100	H18C...O14 ^{vii}	2.8100
C12...H17C	2.6700	H18C...C14 ^{vii}	3.0300
C12...H9A	3.0900		
C13—O13—C17	116.7 (3)	C4—C5—H5	119.00
C14—O14—C18	117.1 (3)	C6—C5—H5	119.00
C4—O4—H4	109.00	C1—C6—H6	120.00
C8—N1—C9	124.5 (3)	C5—C6—H6	120.00
C9—N1—H1	110.00	C1—C7—H7A	108.00
C8—N1—H1	125.00	C1—C7—H7B	108.00
C2—C1—C7	120.1 (3)	C8—C7—H7A	108.00
C6—C1—C7	121.8 (3)	C8—C7—H7B	108.00
C2—C1—C6	118.0 (3)	H7A—C7—H7B	109.00
C1—C2—C3	120.7 (3)	N1—C9—H9A	109.00
C13—C3—C2	119.8 (3)	N1—C9—H9B	109.00

C13—C3—C4	118.6 (3)	C10—C9—H9A	109.00
C2—C3—C4	121.6 (4)	C10—C9—H9B	109.00
O4—C4—C3	118.7 (3)	H9A—C9—H9B	109.00
O4—C4—C5	123.5 (3)	C9—C10—H10A	108.00
C3—C4—C5	117.8 (3)	C9—C10—H10B	108.00
C4—C5—C6	121.1 (3)	C11—C10—H10A	108.00
C1—C6—C5	120.8 (4)	C11—C10—H10B	108.00
C1—C7—C8	115.5 (3)	H10A—C10—H10B	109.00
O8—C8—N1	124.1 (3)	C11—C12—H12	119.00
O8—C8—C7	117.7 (4)	C13—C12—H12	119.00
N1—C8—C7	118.2 (3)	C14—C15—H15	120.00
N1—C9—C10	112.2 (3)	C16—C15—H15	120.00
C9—C10—C11	114.1 (3)	C11—C16—H16	119.00
C10—C11—C16	122.9 (3)	C15—C16—H16	119.00
C10—C11—C12	119.3 (3)	O13—C17—H17A	109.00
C12—C11—C16	117.8 (3)	O13—C17—H17B	109.00
C11—C12—C13	121.4 (4)	O13—C17—H17C	110.00
O13—C13—C12	125.3 (3)	H17A—C17—H17B	109.00
O13—C13—C14	114.7 (3)	H17A—C17—H17C	109.00
C12—C13—C14	120.0 (3)	H17B—C17—H17C	109.00
O14—C14—C15	125.3 (3)	O14—C18—H18A	109.00
O14—C14—C13	115.6 (3)	O14—C18—H18B	109.00
C13—C14—C15	119.2 (3)	O14—C18—H18C	109.00
C14—C15—C16	119.9 (4)	H18A—C18—H18B	109.00
C11—C16—C15	121.8 (3)	H18A—C18—H18C	109.00
C1—C2—H2	120.00	H18B—C18—H18C	110.00
C3—C2—H2	120.00		
C17—O13—C13—C12	1.8 (5)	C3—C4—C5—C6	-1.9 (5)
C17—O13—C13—C14	-178.4 (3)	C4—C5—C6—C1	0.7 (6)
C18—O14—C14—C13	-179.7 (3)	C1—C7—C8—O8	161.4 (3)
C18—O14—C14—C15	0.1 (5)	C1—C7—C8—N1	-20.3 (5)
C9—N1—C8—O8	0.0 (6)	N1—C9—C10—C11	66.8 (4)
C9—N1—C8—C7	-178.2 (3)	C9—C10—C11—C12	86.5 (4)
C8—N1—C9—C10	-115.1 (4)	C9—C10—C11—C16	-91.8 (4)
C6—C1—C2—C3	-0.4 (5)	C10—C11—C12—C13	-178.9 (3)
C7—C1—C2—C3	176.3 (3)	C16—C11—C12—C13	-0.5 (5)
C2—C1—C6—C5	0.5 (5)	C10—C11—C16—C15	178.8 (3)
C7—C1—C6—C5	-176.1 (3)	C12—C11—C16—C15	0.5 (5)
C2—C1—C7—C8	-78.9 (4)	C11—C12—C13—O13	179.5 (3)
C6—C1—C7—C8	97.7 (4)	C11—C12—C13—C14	-0.3 (5)
C1—C2—C3—C13	178.4 (3)	O13—C13—C14—O14	1.0 (4)
C1—C2—C3—C4	-0.9 (6)	O13—C13—C14—C15	-178.7 (3)
C13—C3—C4—O4	1.3 (5)	C12—C13—C14—O14	-179.2 (3)
C13—C3—C4—C5	-177.3 (3)	C12—C13—C14—C15	1.1 (5)
C2—C3—C4—O4	-179.4 (3)	O14—C14—C15—C16	179.2 (3)
C2—C3—C4—C5	2.0 (5)	C13—C14—C15—C16	-1.1 (5)
O4—C4—C5—C6	179.5 (3)	C14—C15—C16—C11	0.3 (5)

Symmetry codes: (i) $-x+3/2, y+1/2, -z+1/2$; (ii) $-x+1, -y+1, -z+1$; (iii) $x-1/2, -y+1/2, z-1/2$; (iv) $x+1/2, -y+1/2, z+1/2$; (v) $-x+1, -y, -z+1$; (vi) $-x+1/2, y+1/2, -z+1/2$; (vii) $-x+2, -y+1, -z+1$; (viii) $-x+3/2, y-1/2, -z+1/2$; (ix) $-x+1/2, y-1/2, -z+1/2$.

supplementary materials

Hydrogen-bond geometry (\AA , $^\circ$)

$D-H\cdots A$	$D-H$	$H\cdots A$	$D\cdots A$	$D-H\cdots A$
$N1-H1\cdots O14^{iii}$	0.91	2.37	3.066 (4)	134
$O4-H4\cdots O8^{iii}$	0.90	1.74	2.616 (4)	165

Symmetry codes: (iii) $x-1/2, -y+1/2, z-1/2$.

Fig. 1

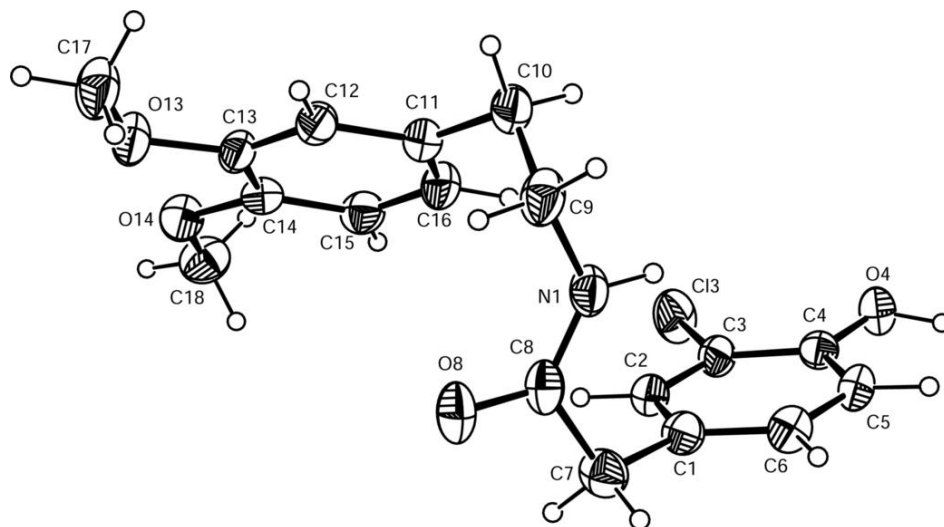


Fig. 2

